



1st User Meeting

Introduction

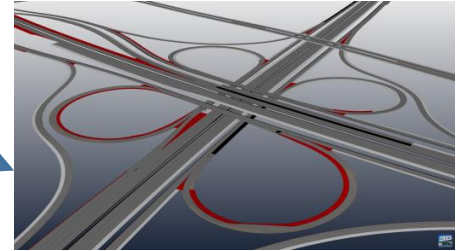
Dr.-Ing. Gunnar Gräfe

3D Mapping provides the bridge between real world and the perfect digital twin

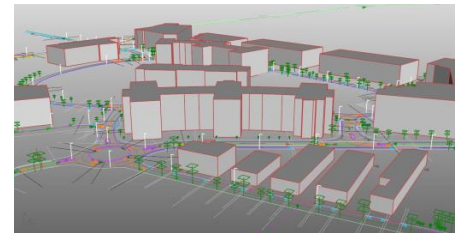
3D Mapping digitizes the reality for projects worldwide using 3D Mapping owned high-end mobile mapping systems or partner systems.



3D Mapping extracts all object and attribute information from scanner and camera data with outstanding quality.



3D Mapping produces as-built maps for engineering or automotive HD Reference maps including all road logic for autonomous driving.



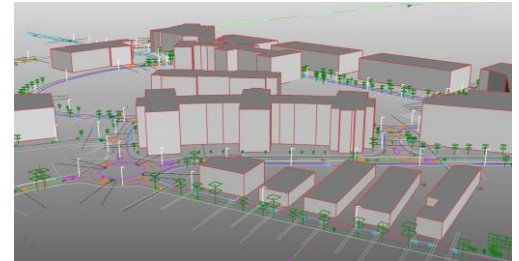
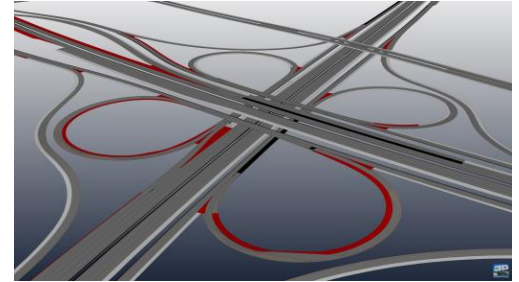
3D Mapping Solutions Fields of Activity

We bring reality into digital worlds.

- Engineering Surveying

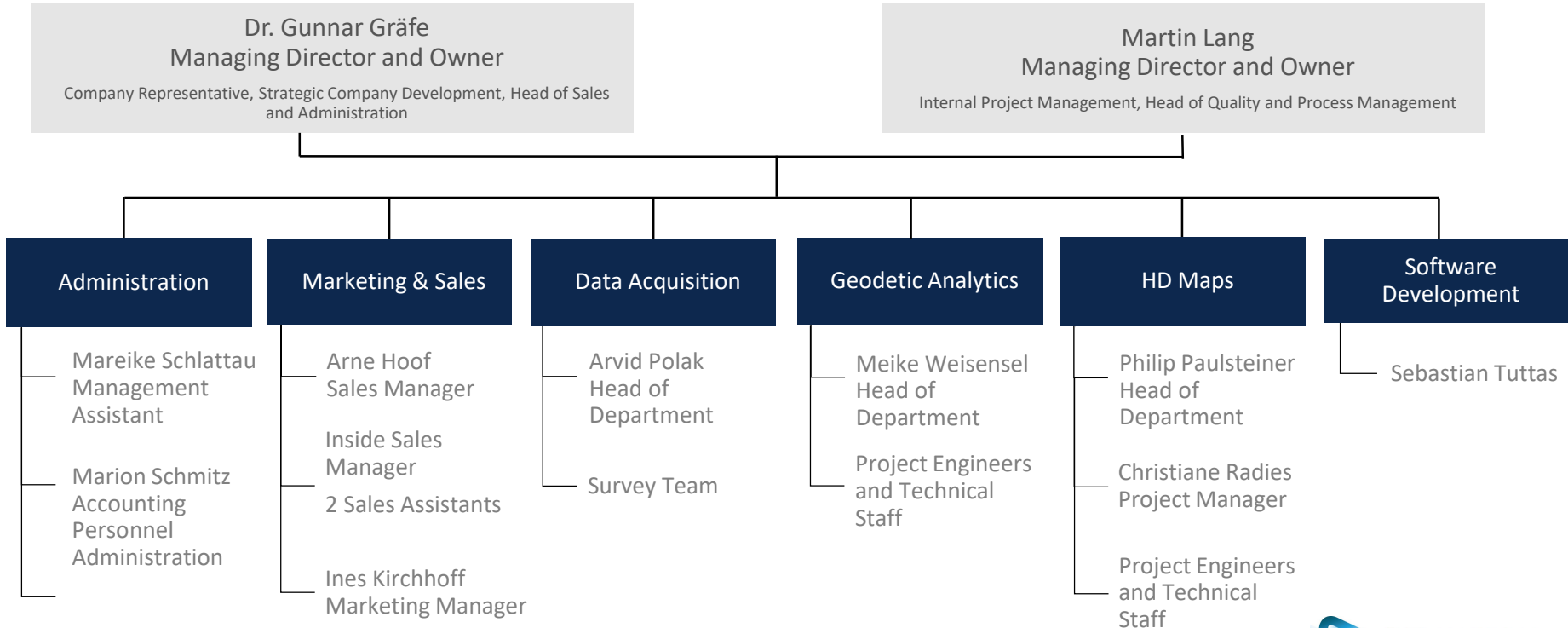


- Automotive Applications



Company Structure

Total number of Employees: 49



3D Mapping Global Partners

- Data Acquisition



- Engineering Surveying



3D Mapping Solutions Inc.
Pittsburgh, PA, USA

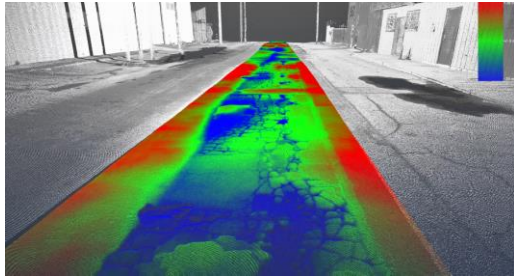
- Engineering Surveying
and Automotive Applications

Liang Tang, Tectang Co. Ltd,
China



3D Mapping Automotive Data Formats

- Surface Model Formats



- OpenCRG



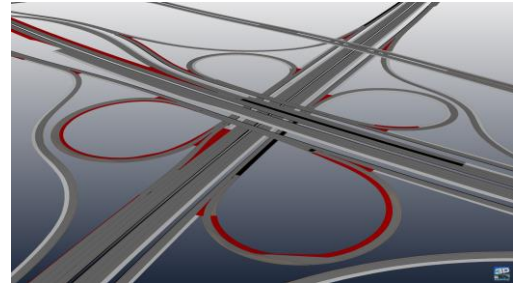
- RGR



- Road5 for IPG CarMaker



- OpenDrive



3D Mapping Automotive Cooperations



3D Mapping Race Track and Proving Ground Cooperations

- Race Tracks



- Proving Grounds



3D Mapping Solutions GmbH

Raiffeisenstraße 16
83607 Holzkirchen

Tel.: +49 (0)8024 46041-00

Fax: +49 (0)8024 46041-01

info@3d-mapping.de



www.3d-mapping.de